

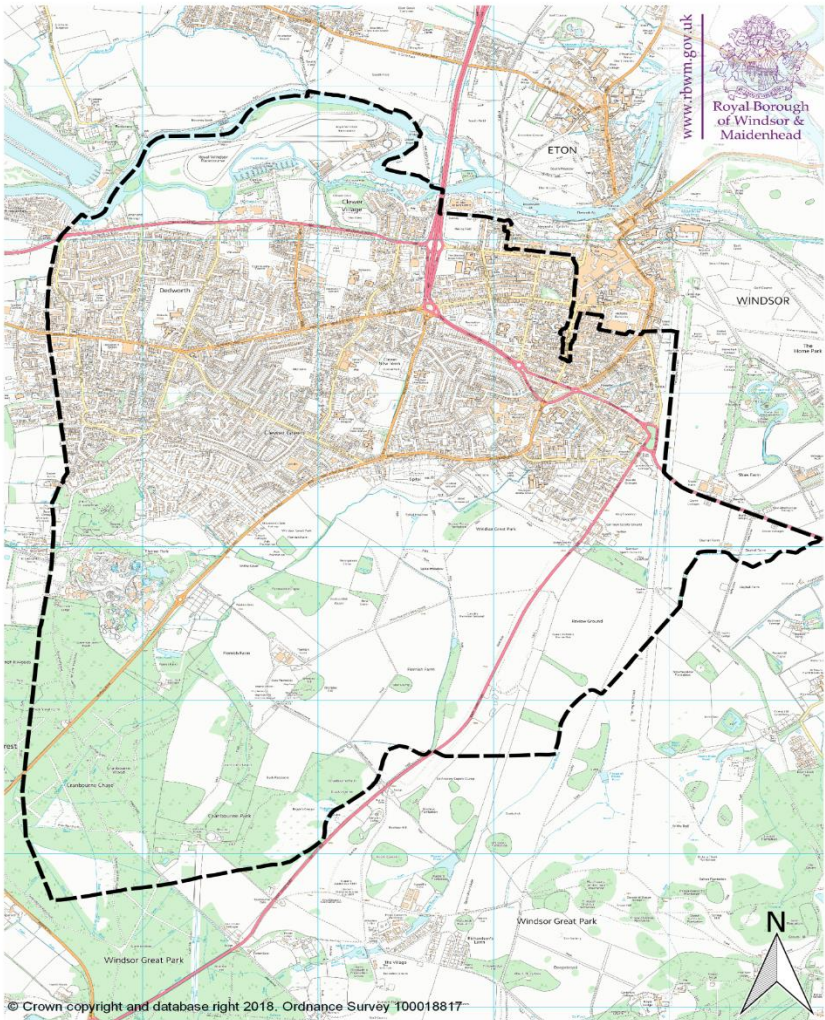
QUICK GUIDE TO THE WINDSOR NEIGHBOURHOOD PLAN

What is the Windsor Neighbourhood Plan?

This Plan is a truly community led plan by Windsorians for Windsor and could help shape the town until 2034.

A Neighbourhood Plan is primarily about what should get planning permission. It gives communities the ability to develop a shared vision for their neighbourhood and to influence the development and growth in their local area. It cannot prevent development, but it can help to shape it, protecting what is special, using local policies special to the area, created according to local preference. It aims to help planners and developers to make better decisions which take local issues into account, and to guide and educate.

Map of the WNP Area



The Area designated by the Royal Borough covers most of the residential area of Windsor (excluding the town centre and riverside, and the western edge which is in Bray Parish). The Plan has followed a lengthy process of research and canvassing the opinions of residents over several years. It has been through a defined legal process, involving seven stages of consultation with residents, revision and re drafting according to community wishes, as well

as examination from an independent inspector. It is based on clear evidence and detailed research.

The WNP focuses on:

- Protecting green and open spaces in the Area by designating as “Local Green Spaces”
- Re-greening Windsor’s streets and the protection of the environment, creating special Green Routes
- Protecting unique local heritage and character with a “Local List” of important heritage buildings
- Encouraging high quality design with a Windsor Design Guide and Area Design Guides to help create a more attractive town
- Protecting special views across Windsor
- Encouraging homes with enough amenity space and parking
- Supporting community use for pubs and shops
- Encouraging “Master planning” of large sites such as Alma Road

Benefits for Windsor

Better planning decisions for Windsor, more in accordance with the wishes of the community. The WNP will become part of the planning policy for our Area which must be considered when planning decisions are made. If the plan is “made” it will apply which ever group holds the Council. Better planning decisions and protection for what is special about the Area for Windsor that take local peoples wishes into account are more likely.

Money for Windsor priorities. If the Neighbourhood Plan passes Referendum the Neighbourhood Area will receive 25% of Community Infrastructure Levy contributions from future development in the Area to spend on local priorities. At present Windsor is unparished and so funds are allocated by RBWM according to their own priorities.

Provides a basis for the future. The WNP lays out what is special about the Area and the plan can be improved and added to in the future.

How to find out more

1. Join one of our public Zoom presentations on 22nd or 28th April - 6.30pm (To join, please email info@windsorplan.org.uk, telling us the date you want to attend and we will send you a link).
2. View a hard copy of the plan at Windsor and Dedworth Libraries (after 12th April 2021).
3. More information and the detailed plan are available on:
<https://www.windsorplan.org.uk/>
OR
<https://www.rbwm.gov.uk/neighbourhoodplans/progress-neighbourhood-plans>